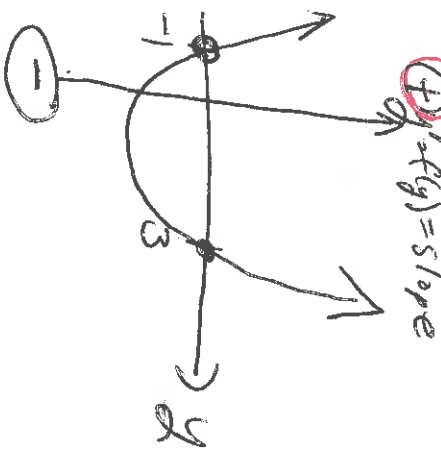
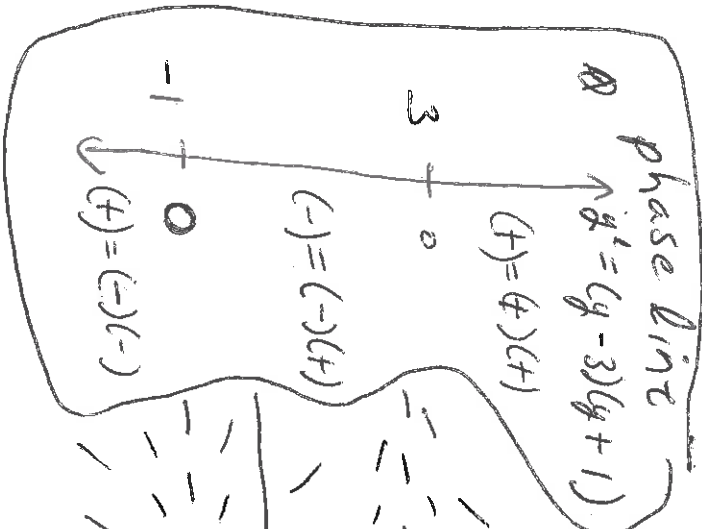
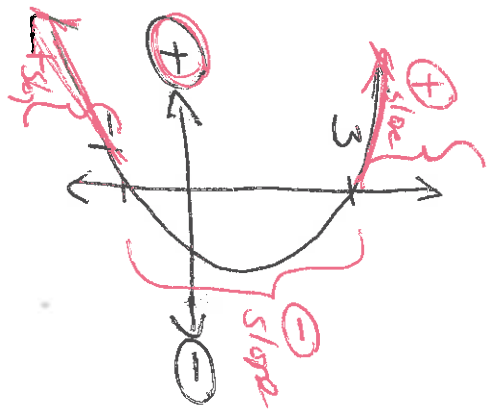


Slope = $y' = f(y) = (y-3)(y+1)$

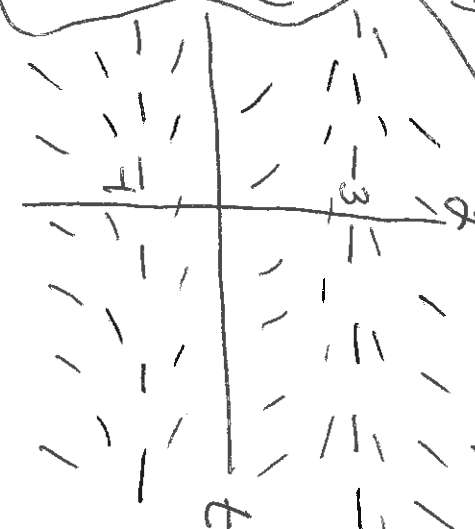
y vs $f(y)$



rotate ↻

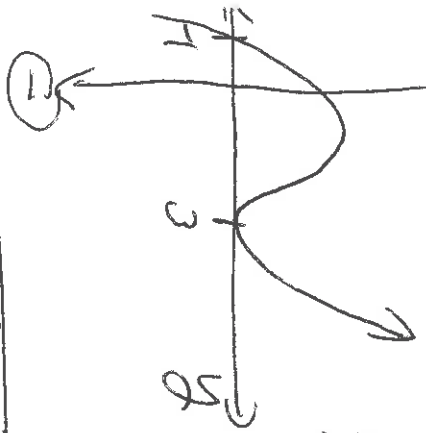


$y = 3$ unstable eq. s.h.
 $y = -1$ stable eq. s.h.

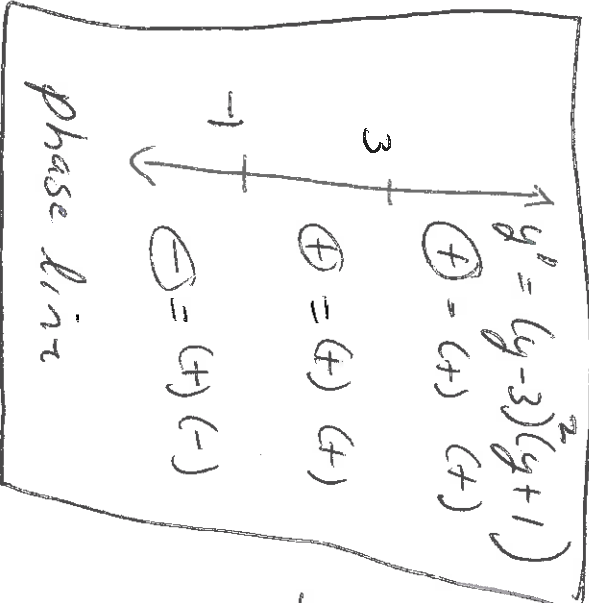
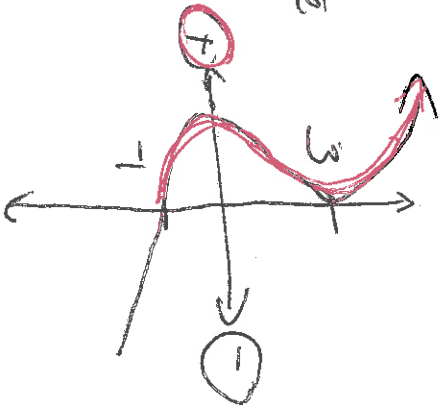


$y' = f(y) = (y-3)^2(y+1)$

$f(y)$



rotate ↻



$y = 3$ semi-stable eq. s.h.
 $y = -1$ unstable eq. s.h.

